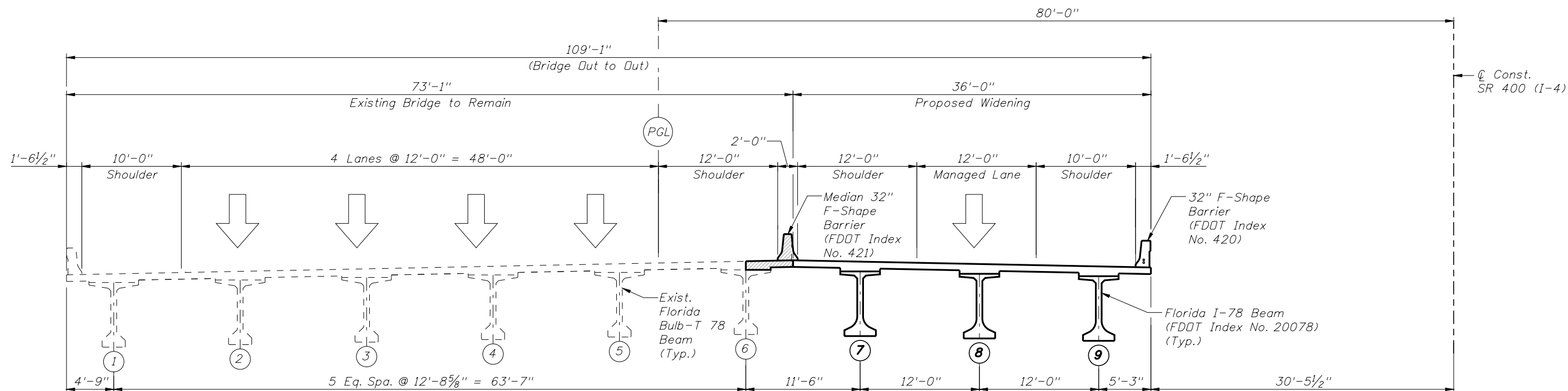


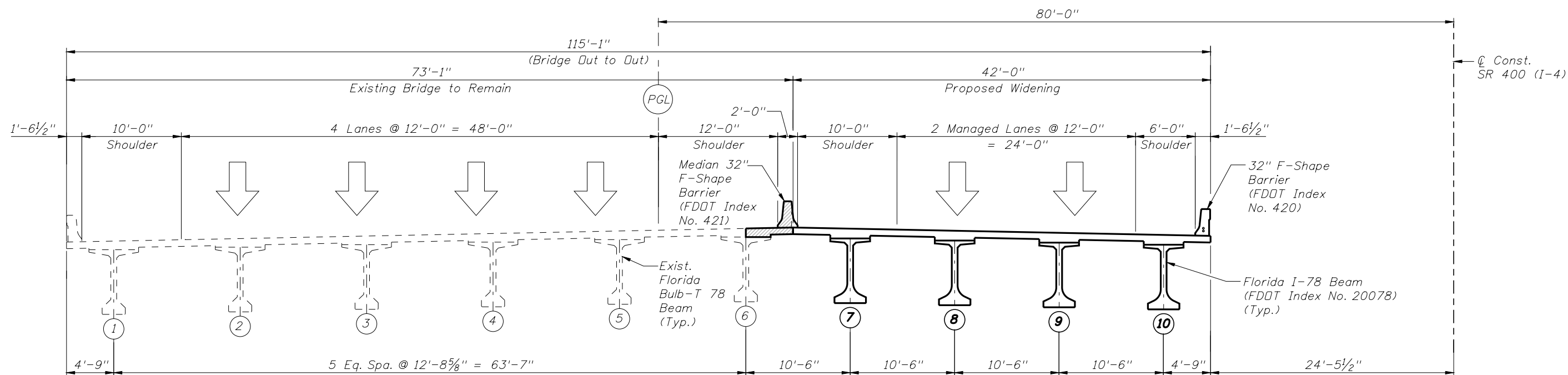
APPENDIX A-1

PROPOSED TYPICAL SECTIONS



TYPICAL SECTION (ORIGINAL WIDENING) - SPANS 1WB, 2WB AND 1 EB THRU 7EB

(LOOKING STATIONS AHEAD - WESTBOUND BRIDGE)
(LOOKING STATIONS BACK - EASTBOUND BRIDGE)
Legend: Portion of Existing Bridge to be removed

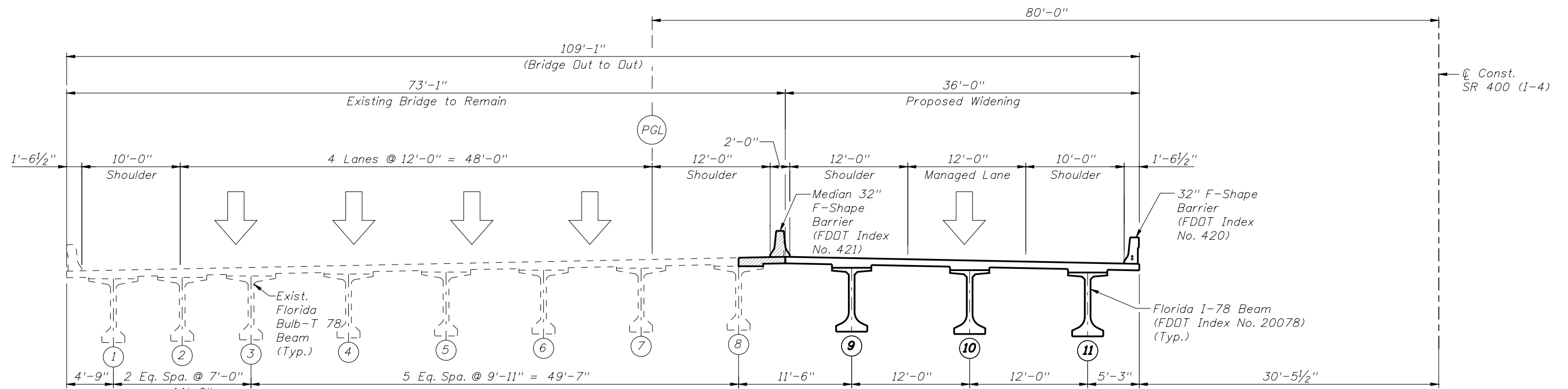


TYPICAL SECTION (ALTERNATIVE 1) - SPANS 1WB, 2WB AND 1 EB THRU 7EB

(LOOKING STATIONS AHEAD - WESTBOUND BRIDGE)
(LOOKING STATIONS BACK - EASTBOUND BRIDGE)
Legend: Portion of Existing Bridge to be removed

BRIDGE NOS. 790196 & 790197

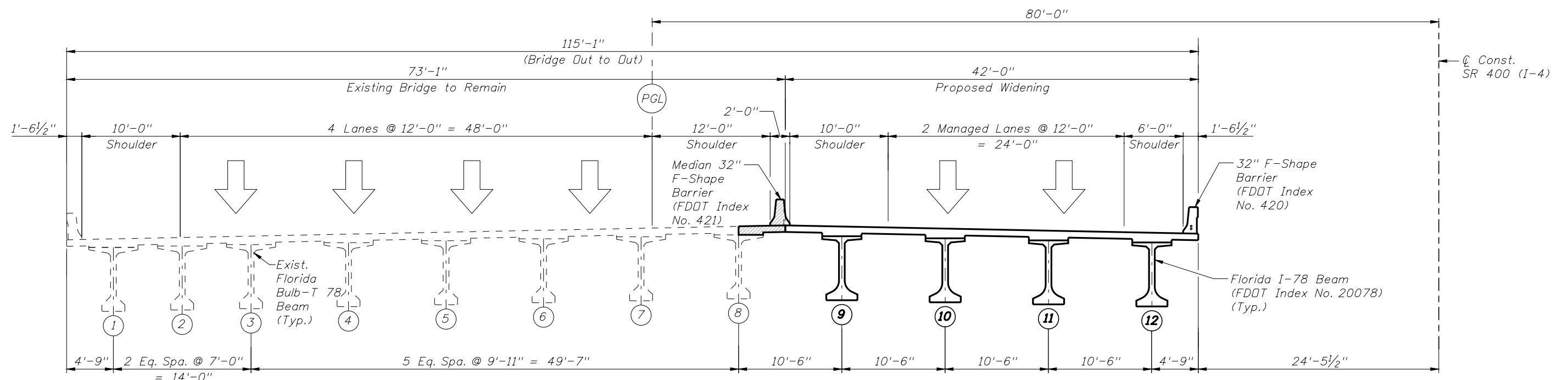
REVISIONS						ENGINEER OF RECORD:			FLORIDA DEPARTMENT OF TRANSPORTATION			I-4 PD&E STUDY TYPICAL SECTIONS SEGMENT 4	SHEET NO. 1 OF 8
DATE	BY	DESCRIPTION	DATE	BY	DESCRIPTION	HNTB CORPORATION 610 CRESCENT EXECUTIVE CT SUITE 400 LAKE MARY, FL 32746 (407) 805-0355 CERT. OF AUTH. NO. 6500 COREY A. MARCHMAN, P.E. NO. 75452			ROAD NO.	COUNTY	FINANCIAL PROJECT ID		
									400	SEMINOLE VOLUSIA	432100-1-22-01		



TYPICAL SECTION (ORIGINAL WIDENING) - SPAN 3WB

(LOOKING STATIONS AHEAD - WESTBOUND BRIDGE)

Legend: Portion of Existing Bridge to be removed



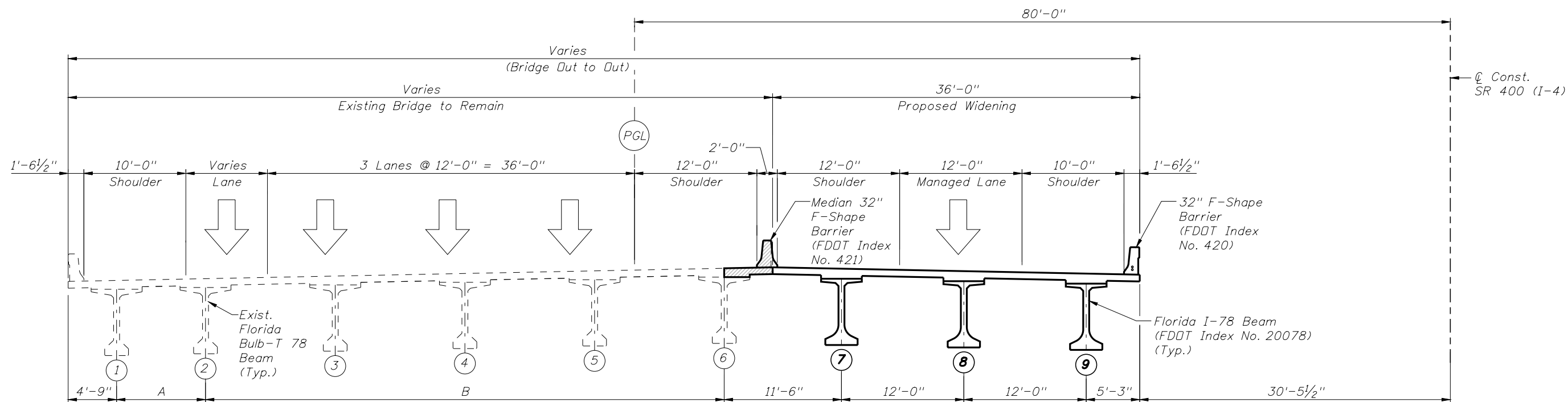
TYPICAL SECTION (ALTERNATIVE 1) - SPAN 3WB

(LOOKING STATIONS AHEAD - WESTBOUND BRIDGE)

Legend: Portion of Existing Bridge to be removed

BRIDGE NOS. 790196 & 790197

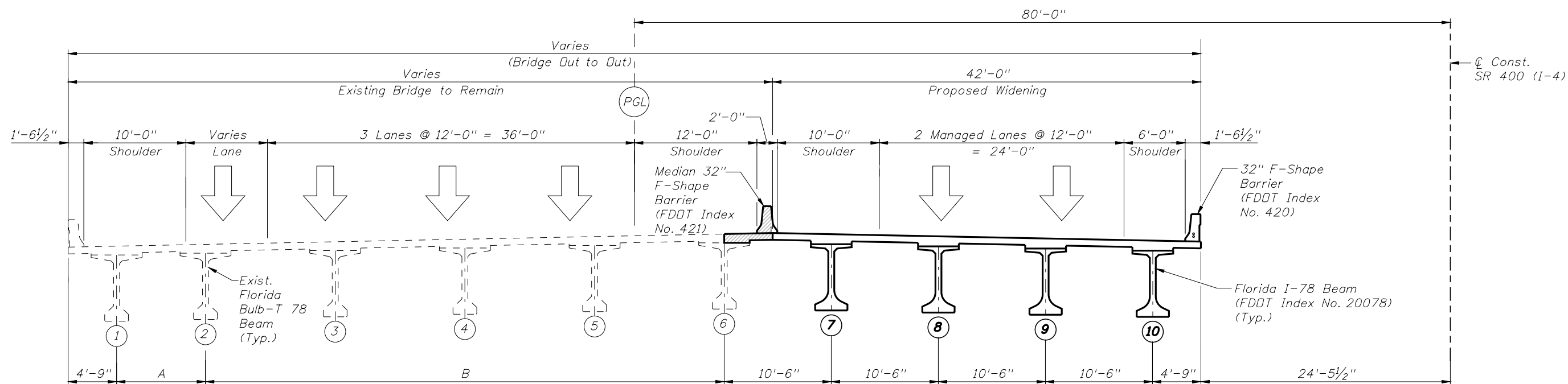
REVISIONS						ENGINEER OF RECORD:			FLORIDA DEPARTMENT OF TRANSPORTATION			I-4 PD&E STUDY TYPICAL SECTIONS SEGMENT 4	SHEET NO. 2 OF 8
DATE	BY	DESCRIPTION	DATE	BY	DESCRIPTION	HNTB CORPORATION 610 CRESCENT EXECUTIVE CT SUITE 400 LAKE MARY, FL 32746 (407) 805-0355 CERT. OF AUTH. NO. 6500 COREY A. MARCHMAN, P.E. NO. 75452			ROAD NO.	COUNTY	FINANCIAL PROJECT ID		
									400	SEMINOLE VOLUSIA	432100-1-22-01		



TYPICAL SECTION (ORIGINAL WIDENING) – SPANS 4WB, 5WB, 6WB, EB, 9EB AND 10EB

(LOOKING STATIONS AHEAD – WESTBOUND BRIDGE)
(LOOKING STATIONS BACK – EASTBOUND BRIDGE)
Legend: Portion of Existing Bridge to be removed

SPANS	A	B
4WB & 8EB	Varies from 12'-8 ⁵ / ₈ " to 8'-8 ⁵ / ₈ "	4 Spa. @ 12'-8 ⁵ / ₈ "
5WB & 9EB	Varies from 11'-11" to 7'-11"	4 Spa. @ 11'-11"
6WB & 10EB	Varies from 11'-1 ³ / ₈ " to 7'-1 ³ / ₈ "	4 Spa. @ 11'-1 ³ / ₈ "

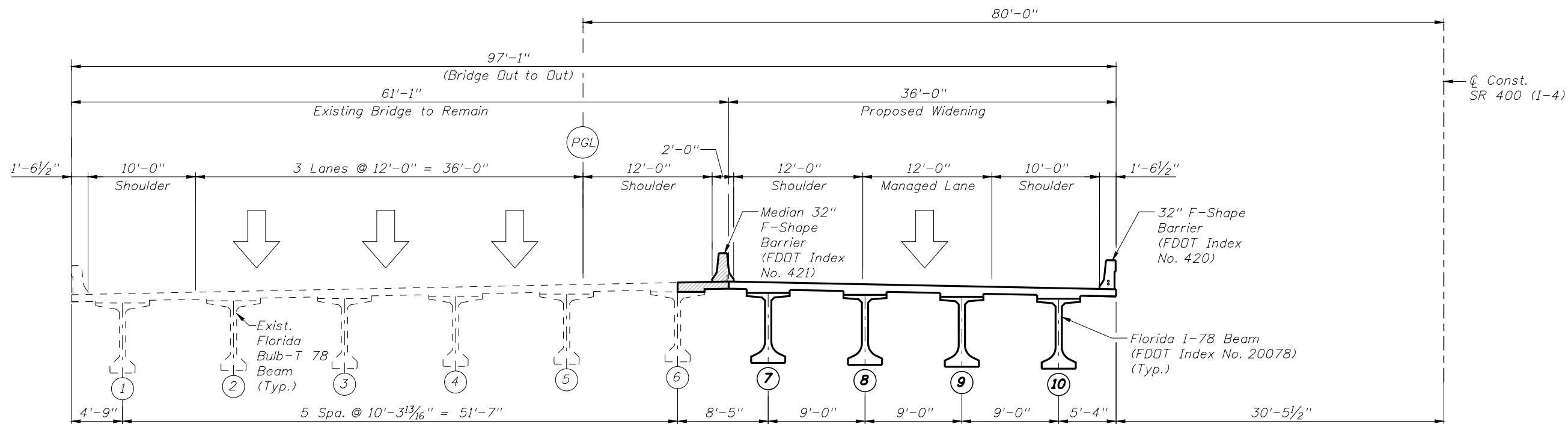


TYPICAL SECTION (ALTERNATIVE 1) – SPANS 4WB, 5WB, 6WB, EB, 9EB AND 10EB

(LOOKING STATIONS AHEAD – WESTBOUND BRIDGE)
(LOOKING STATIONS BACK – EASTBOUND BRIDGE)
Legend: Portion of Existing Bridge to be removed

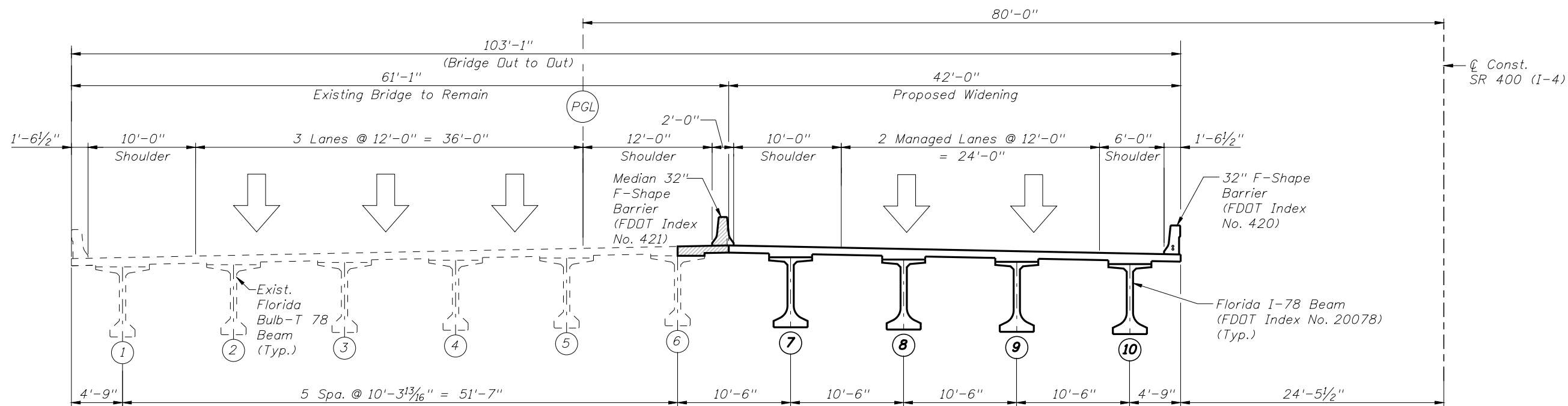
BRIDGE NOS. 790196 & 790197

REVISIONS						ENGINEER OF RECORD: HNTB CORPORATION 610 CRESCENT EXECUTIVE CT SUITE 400 LAKE MARY, FL 32746 (407) 805-0355 CERT. OF AUTH. NO. 6500 COREY A. MARCHMAN, P.E. NO. 75452	FLORIDA DEPARTMENT OF TRANSPORTATION			I-4 PD&E STUDY TYPICAL SECTIONS SEGMENT 4	SHEET NO. 3 OF 8
DATE	BY	DESCRIPTION	DATE	BY	DESCRIPTION		ROAD NO.	COUNTY	FINANCIAL PROJECT ID		
							400	SEMINOLE VOLUSIA	432100-1-22-01		



TYPICAL SECTION (ORIGINAL WIDENING) - SPANS 12WB AND 12EB

(LOOKING STATIONS AHEAD - WESTBOUND BRIDGE)
(LOOKING STATIONS BACK - EASTBOUND BRIDGE)
Legend: Portion of Existing Bridge to be removed

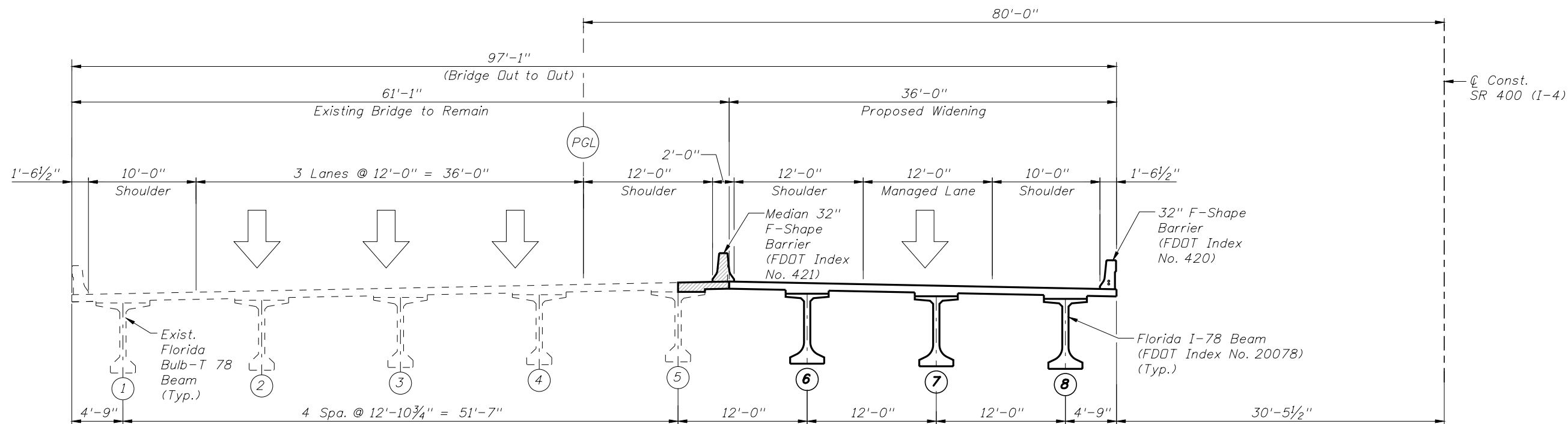


TYPICAL SECTION (ALTERNATIVE 1) - SPANS 12WB AND 12EB

(LOOKING STATIONS AHEAD - WESTBOUND BRIDGE)
(LOOKING STATIONS BACK - EASTBOUND BRIDGE)
Legend: Portion of Existing Bridge to be removed

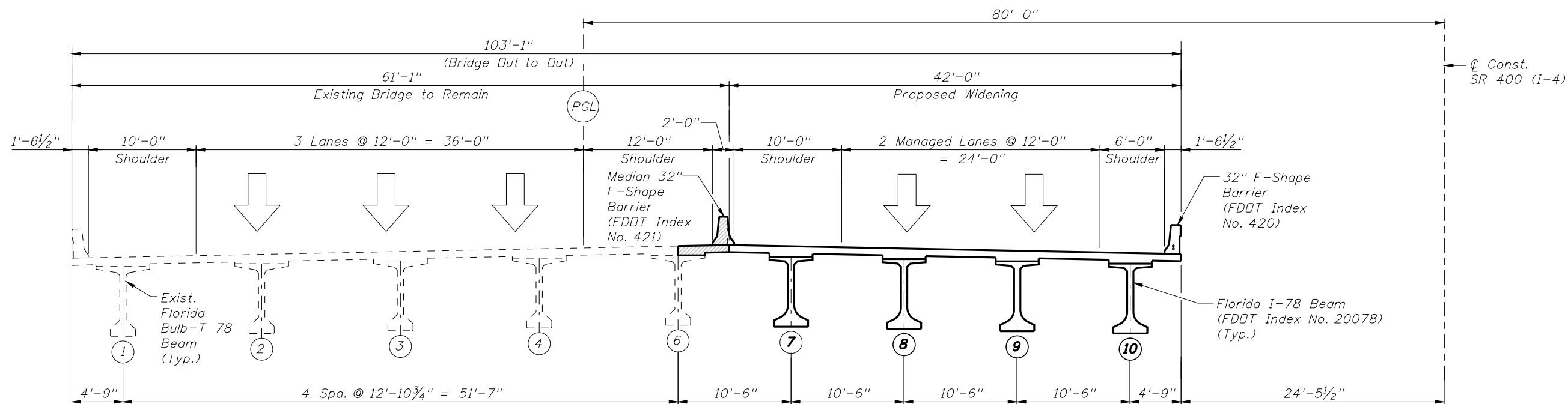
BRIDGE NOS. 790196 & 790197

REVISIONS						ENGINEER OF RECORD:			FLORIDA DEPARTMENT OF TRANSPORTATION			I-4 PD&E STUDY TYPICAL SECTIONS SEGMENT 4	SHEET NO. 4 OF 8
DATE	BY	DESCRIPTION	DATE	BY	DESCRIPTION	HNTB CORPORATION 610 CRESCENT EXECUTIVE CT SUITE 400 LAKE MARY, FL 32746 (407) 805-0355 CERT. OF AUTH. NO. 6500 COREY A. MARCHMAN, P.E. NO. 75452			ROAD NO.	COUNTY	FINANCIAL PROJECT ID		
									400	SEMINOLE VOLUSIA	432100-1-22-01		



TYPICAL SECTION (ORIGINAL WIDENING) – SPANS 7WB THRU 11WB, 14WB THRU 20WB AND 13EB THRU 20EB

(LOOKING STATIONS AHEAD – WESTBOUND BRIDGE)
(LOOKING STATIONS BACK – EASTBOUND BRIDGE)
Legend: Portion of Existing Bridge to be removed

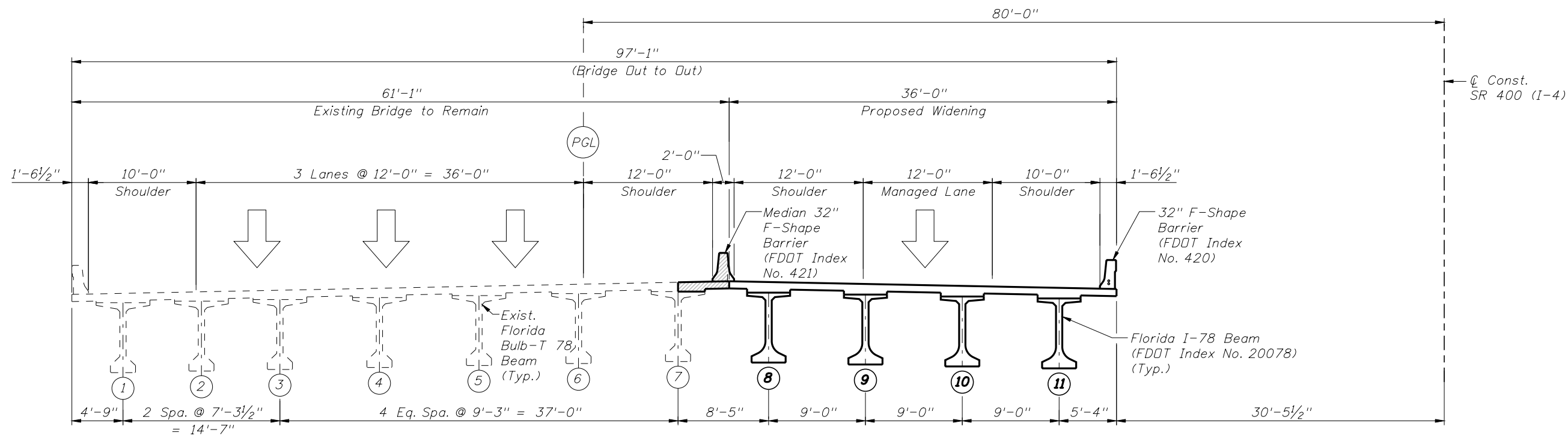


TYPICAL SECTION (ALTERNATIVE 1) – SPANS 7WB THRU 11WB, 14WB THRU 20WB AND 13EB THRU 20EB

(LOOKING STATIONS AHEAD – WESTBOUND BRIDGE)
(LOOKING STATIONS BACK – EASTBOUND BRIDGE)
Legend: Portion of Existing Bridge to be removed

BRIDGE NOS. 790196 & 790197

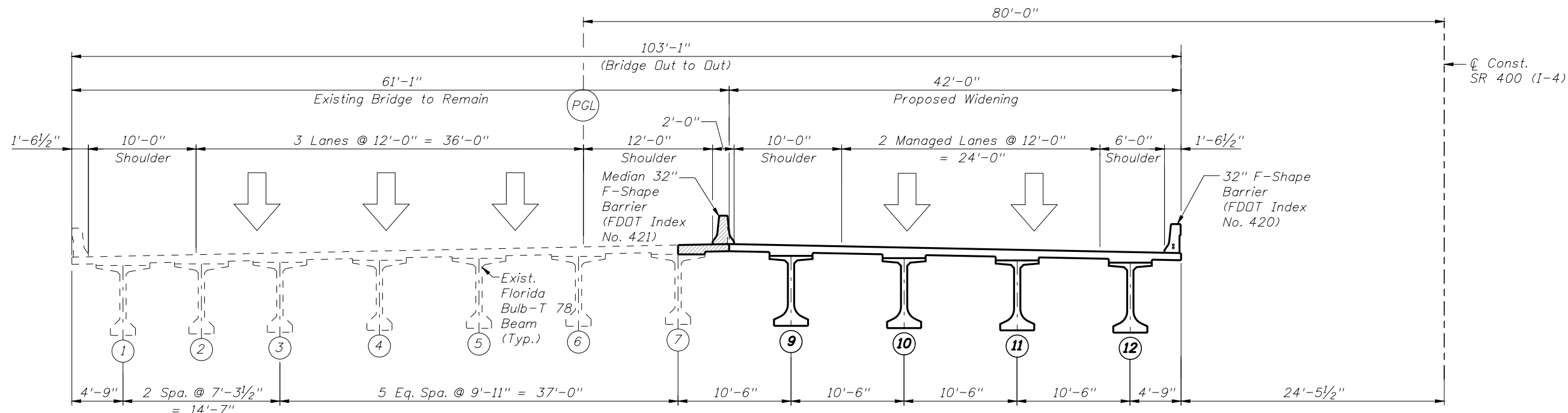
REVISIONS						ENGINEER OF RECORD: HNTB CORPORATION 610 CRESCENT EXECUTIVE CT SUITE 400 LAKE MARY, FL 32746 (407) 805-0355 CERT. OF AUTH. NO. 6500 COREY A. MARCHMAN, P.E. NO. 75452	FLORIDA DEPARTMENT OF TRANSPORTATION			I-4 PD&E STUDY TYPICAL SECTIONS SEGMENT 4	SHEET NO. 5 OF 8
DATE	BY	DESCRIPTION	DATE	BY	DESCRIPTION		ROAD NO.	COUNTY	FINANCIAL PROJECT ID		
							400	SEMINOLE VOLUSIA	432100-1-22-01		



TYPICAL SECTION (ORIGINAL WIDENING) - SPAN 13WB AND 11EB

(LOOKING STATIONS AHEAD - WESTBOUND BRIDGE)
(LOOKING STATIONS BACK - EASTBOUND BRIDGE)

Legend: Portion of Existing Bridge to be removed



TYPICAL SECTION (ALTERNATIVE 1) - SPAN 13WB AND 11EB

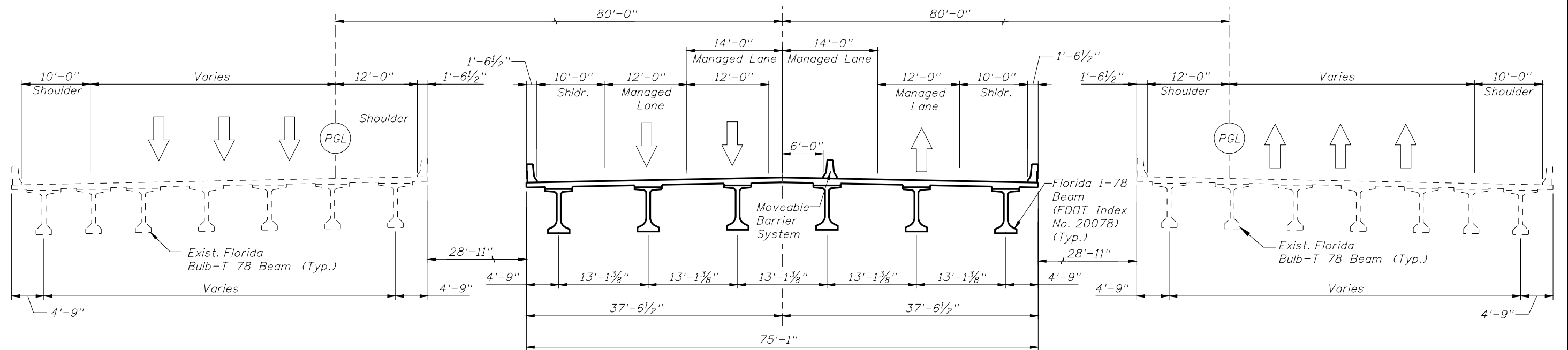
(LOOKING STATIONS AHEAD - WESTBOUND BRIDGE)
(LOOKING STATIONS BACK - EASTBOUND BRIDGE)

Legend: Portion of Existing Bridge to be removed

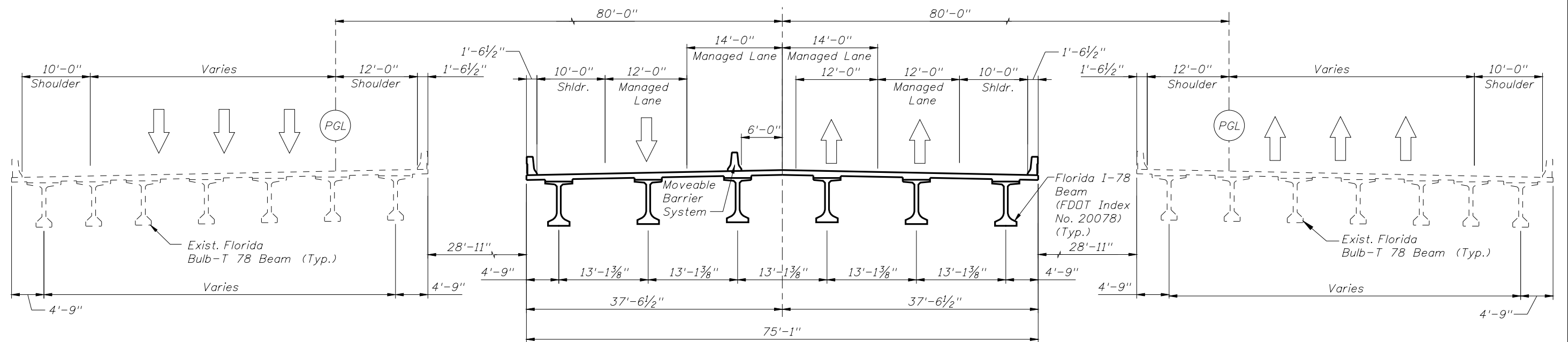
BRIDGE NOS. 790196 & 790197

REVISIONS						ENGINEER OF RECORD:	FLORIDA DEPARTMENT OF TRANSPORTATION			I-4 PD&E STUDY TYPICAL SECTIONS SEGMENT 4	SHEET NO. 6 OF 8
DATE	BY	DESCRIPTION	DATE	BY	DESCRIPTION		ROAD NO.	COUNTY	FINANCIAL PROJECT ID		
							400	SEMINOLE VOLUSIA	432100-1-22-01		

HNTB CORPORATION
610 CRESCENT EXECUTIVE CT
SUITE 400
LAKE MARY, FL 32746
(407) 805-0355
CERT. OF AUTH. NO. 6500
COREY A. MARCHMAN, P.E. NO. 75452



TYPICAL SECTION ALTERNATIVE 2
(Shown with WB Configuration)



TYPICAL SECTION ALTERNATIVE 2
(Shown with EB Configuration)

BRIDGE NOS. 790196 & 790197

REVISIONS						ENGINEER OF RECORD:			FLORIDA DEPARTMENT OF TRANSPORTATION			I-4 PD&E STUDY TYPICAL SECTIONS SEGMENT 4		SHEET NO. 7 OF 8
DATE	BY	DESCRIPTION	DATE	BY	DESCRIPTION	HNTB CORPORATION 610 CRESCENT EXECUTIVE CT SUITE 400 LAKE MARY, FL 32746 (407) 805-0355 CERT. OF AUTH. NO. 6500 COREY A. MARCHMAN, P.E. NO. 75452			ROAD NO.	COUNTY	FINANCIAL PROJECT ID			
									400	SEMINOLE VOLUSIA	432100-1-22-01			



*I-4 PD&E STUDY
TYPICAL SECTIONS
SEGMENT 4*

8 OF 8

09-SEP-2014	14:05	Jcastillo	\\Lkmw00\pmwork3\Jobs\59219 - 14 SAMR\TECHPROD\43210012201\Segment 4\struct\DGN\TypSect-8.dgn
-------------	-------	-----------	---